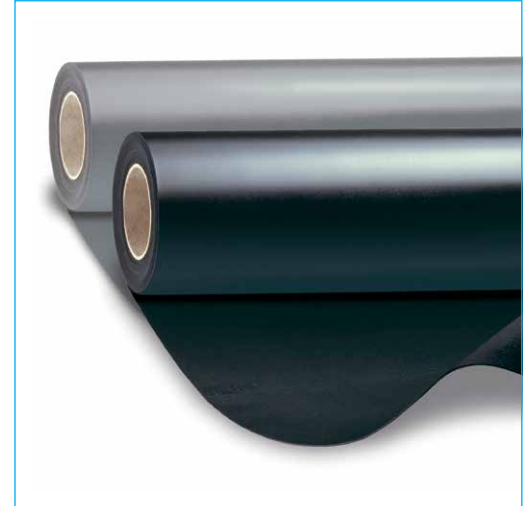


Wolfin IB

SINGLE-PLY, HIGH-POLYMER, ENTIRELY HOMOGENEOUS SYNTHETIC ROOFING AND WATERPROOFING MEMBRANE. THE MEMBRANE IS PRODUCED BY EXTRUSION METHOD.

TYPES AND APPLICATION AREAS

Wolfin IB	Single-ply, homogenous membrane (no different top, middle and under layer)	
Membrane Width	1,100 mm / 1,620 mm	
Nominal thickness	1.5 mm / 2.0 mm	
Colour	Black, grey	
New buildings and refurbishments	<ul style="list-style-type: none"> ▪ Loose-laid under ballast ▪ Wolfin/PYE composite system ▪ Special application: Sealant for use in sealing constructions in plants for storage, filling and handling water-polluting substances (general building supervision approval) 	
Wolfin IB is certified, approved and classified according to	<ul style="list-style-type: none"> ▪ EN 13956 CE Waterproofing of Roofs ▪ EN 13967 CE Waterproofing of Buildings ▪ Fulfils all German requirements (DIN standards) for waterproofing of roofs 	<ul style="list-style-type: none"> ▪ Fulfils UK requirements according to BBA (certificate 14/5143) ▪ EN 13501-1 (Class E) ▪ EN 13948 / FLL
Characteristics of Wolfin IB	<ul style="list-style-type: none"> ▪ Content of high polymer substances more than 94% ▪ More than 55 years of practical experience ▪ Permeable to water vapour diffusion ▪ My-value $\leq 10,000$ (+/- 3,000) ▪ Free of toxic heavy metals ▪ Free of flame retardants ▪ Ozone and UV resistant ▪ Suitable for hot-air and solvent welding throughout its lifetime ▪ Chemical resistance to all insulation material ▪ Resistant to plant roots and rhizomes according to FLL test method 	<ul style="list-style-type: none"> ▪ Unique chemical resistance : <ul style="list-style-type: none"> ▪ Resistant to bitumen, flux oils, mineral oils, fatty acid, kerosene ▪ General building supervision approval for sealants for use in sealing constructions in plants for storage, filling and handling water-polluting substances (LAU plants / WHG)* ▪ Proof of the resistance to sulphurous acid and lactic acid (85%) <p>* WHG = Wasserhaushaltsgesetz (German water resource act)</p>
System parts and accessories	<ul style="list-style-type: none"> ▪ Membrane strips ▪ Internal and external corners ▪ Coated metal sheets (plates/coils) ▪ Lightning protection elements 	<ul style="list-style-type: none"> ▪ Stainless-steel drainage and ventilation elements ▪ System adhesives (Teroson AD 914, Teroson AD Adhesive Spray)



TECHNICAL DATA

Product information according to
EN 13956

- Under ballast (gravel, green roof, traffic areas or similar ...)

EN 13967

- Damp-proof sheets
- Basement tanking sheets

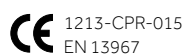
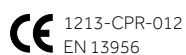
Characteristic	Testing standard	Unit	Details	Result* 1.5 mm	Result* 2.0 mm
Visible defects	EN 1850-2	-	passed	passed	passed
Length	EN 1848-2	m	MDV	15	10
Width	EN 1848-2	m	MDV	1.10 / 1.62	1.10 / 1.62
Straightness	EN 1848-2	mm	MLV	≤ 50	≤ 50
Flatness	EN 1848-2	mm	MLV	≤ 10	≤ 10
Mass per unit area	EN 1849-2	kg/m ²	MDV	1.9	2.5
Effective thickness	EN 1849-2	mm	MDV	1.5	2.0
Watertightness	EN 1928 Method B	kPa	MLV	≥ 400	≥ 400
External fire performance	EN 13501-1	-	-	Class E	Class E
Joint peel resistance	EN 12316-2	N/50 mm	MLV	≥ 150	≥ 150
Joint shear resistance	EN 12317-2	N/50 mm	MLV	≥ 600	≥ 600
Tensile strength longitudinal and transversal	EN 12311-2	N/50 mm	MLV	≥ 16	≥ 16
Elongation longitudinal and transversal	EN 12311-2	%	MLV	≥ 300	≥ 300
Resistance to impact Method A Method B	EN 12691 EN 12691	mm mm	MLV MLV	≥ 600 ≥ 600	≥ 750 ≥ 750
Resistance to static load	EN 12730 Method A	kg	MLV	≥ 20	≥ 20
Durability of watertightness against ageing	EN 1296 EN 1928	-	passed	passed	passed
Durability of watertightness against chemicals	EN 1847 EN 1928	-	passed	passed	passed
Resistance to nail tear	EN 12310-1	N	MLV	≥ 250	≥ 250
Tear resistance longitudinal and transversal	EN 12310-2	N	MLV	≥ 100	≥ 100
Resistance to root penetration	EN 13948	-	passed	passed	passed
Dimensional stability longitudinal and transversal	EN 1107-2	%	MLV	≤ 1.5	≤ 1.5
Foldability at low temperature	EN 495-5	°C	MLV	≤ -25	≤ -25
UV exposure	EN 1297	visual	passed	passed	passed
Water vapour permeability	EN 1931	μ	MDV	10,000 ± 3,000	
Bitumen compatibility (90 days / 70°C)	EN 1548	-	passed	passed	passed

MDV = manufacturer's declared value

MLV = manufacturer's limiting value

* Values in new condition

Date: 01.2020. This technical data sheet was produced according to the latest technical knowledge and standards. Technical changes due to further developments are possible.



Technical support

T +49 6053 708-5141

E awt.beratung.de@bmigroup.com

You can find the declarations of performance on our website [www.bmigroup.com/de / Downloads](http://www.bmigroup.com/de/Downloads).

Wolfin Bautechnik GmbH

Am Rosengarten 5

63607 Wächtersbach Neudorf

T +49 6053 708-0

F +49 6053 708-5130

E export.wolfin.de@bmigroup.com

bmigroup.com/de